

# Martin Audio (.xbl) Libraries for AudioCore Users

*File AudioCore.msi contains AudioCore v8.58 installer.*

*File MA\_DX2.zip contains DX2 8-way files, MA8way.zip contains files for DP448 8-way or MA6way.zip contains files for 6-way* - containing AudioCore library files as follows:

Note: For AudioCore user guides, updates etc., go to [www.xta.co.uk](http://www.xta.co.uk).

## 8-way DX2 presets

(Compatible with Library Manager v4 and AudioCore v8.58 onwards)

MA_DX2_NewLEseries01.xbl	LE2100, LE1500, LE1200
MA_DX2_LM218X03.xbl	W8LM/LMD+WS218X*
MA_DX2_LM-WLX03.xbl	W8LM/LMD+WLX*
MA_DX2_LM_WMX03.xbl	W8LM/LMD+WMX*
MA_DX2_LCDLCWLX02.xbl	W8LC+W8LCD+WLX*
MA_DX2_LCDLC218X02.xbl	W8LC+W8LCD+W8LS/WS218X*
MA_DX2_LDLBLS02.xbl	W8L Longbow+W8LD+W8LS/WS218X*

## 8-way DP448 presets

(Compatible with Library Manager v4 and AudioCore v8.58 onwards)

NewLEseries01_448v4.xbl	LE2100, LE1500, LE1200
LM218X03_448v4.xbl	W8LM/LMD+WS218X*
LM-WLX03_448v4.xbl	W8LM/LMD+WLX*
LM_WMX03_448v4.xbl	W8LM/LMD+WMX*
LCDLCWLX02_448.xbl	W8LC+W8LCD+WLX*
LCDLC218X02_448.xbl	W8LC+W8LCD+W8LS/WS218X*
LDLBLS02_448v4.xbl	W8L Longbow+W8LD+W8LS/WS218X*

*\* Line array presets cater for a wide range of system sizes*

These files allow the user to create AudioCore files which are based on Factory presets without having to type in all the preset data.

## 6-way DP226 presets

(Compatible with Library Manager v3 and AudioCore v8.58 onwards)

MALib3_226v3.xbl	General product presets including W8L* presets and presets for the new LE monitor series – also available 8-way (see below)
MALMWMX02_226v3.xbl	W8LM/LMD+WMX*
MALMWLX02_226v3.xbl	W8LM/LMD+WLX*
MALM21802_226v3.xbl	W8LM/LMD+W8LS/WS218X*
MALCDLC3_226v3.xbl	W8LC+W8LCD*
MALB02_226v3.xbl	W8L Longbow

## 6-way DP446 presets

(Compatible with Library Manager v4 and AudioCore v8.58 onwards)

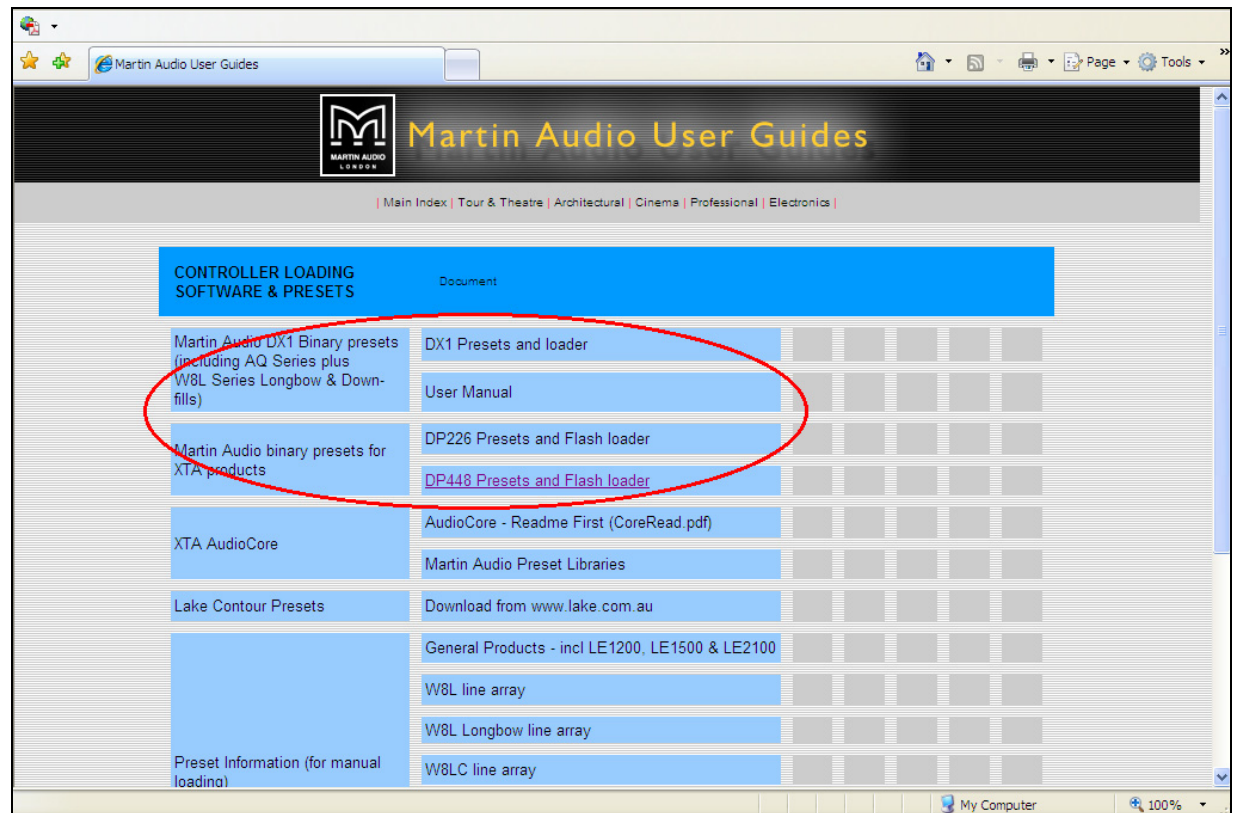
MALMLX01_446v4.xbl	W8LM/LMD+WLX*
--------------------	---------------

(More DP446 presets will follow on a first-come-first-served basis. Contact [info@martin-audio.com](mailto:info@martin-audio.com))

### Important note

If you wish to load a complete family of presets onto a controller (e.g. LD+10LngB, LD+12LngB etc) for manual selection for touring use, you should load them directly into the controller using binary files.

Contact Martin Audio



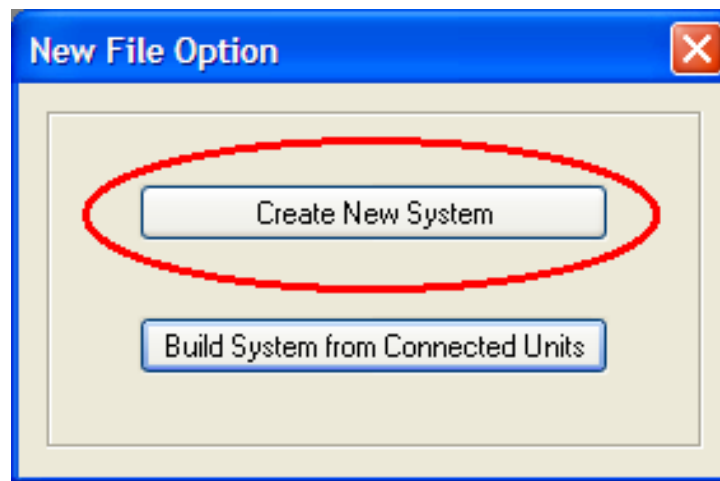
We assume you have a working knowledge of AudioCore V8.58 or later. Please contact XTA for help with operation of AudioCore via [www.xta.co.uk](http://www.xta.co.uk)

**Extract the xbl files to a suitable folder on your pc.  
Do not work from within the zip folder.**

To create a device using one of the presets in an xbl file, run AudioCore and create a new system as follows:

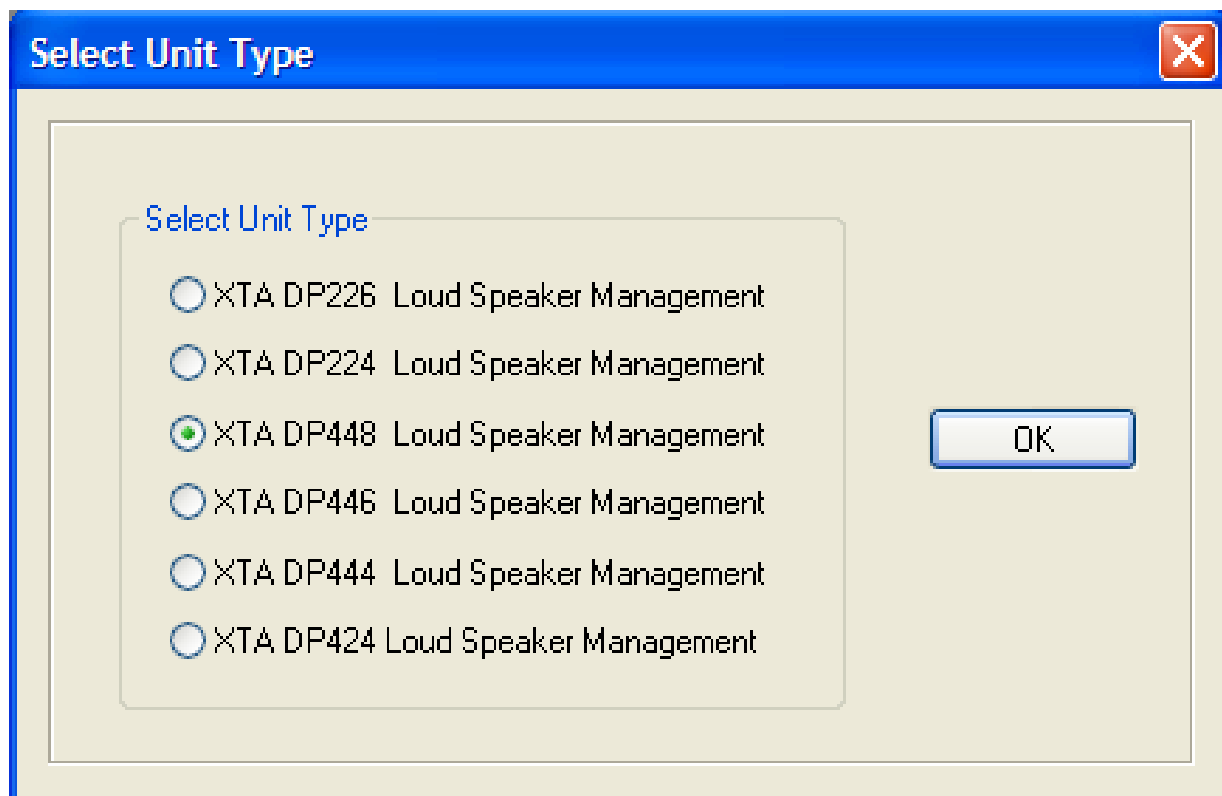
- 1) Click **File** (top left hand side) and then **New**.

This will bring up a window offering you a choice – **Create New System** or **Build System from Connected Units**.



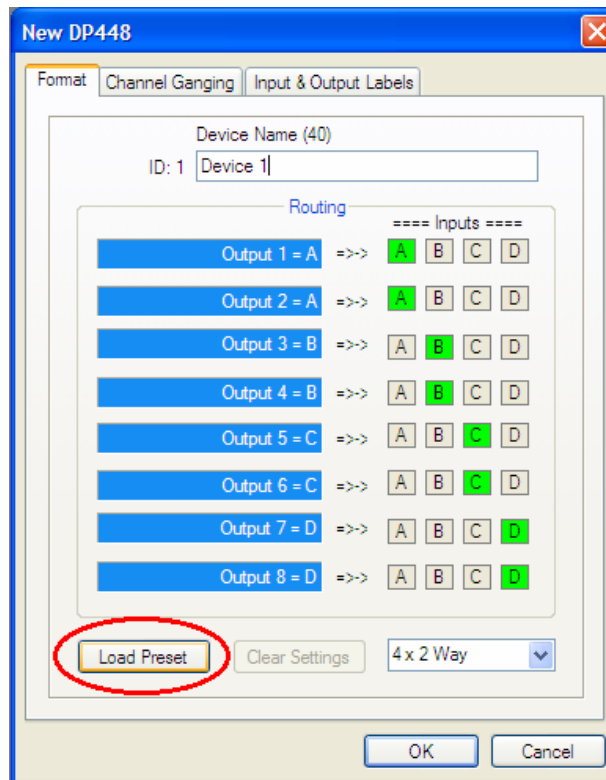
- 2) Click **Create New System**.

This will open a new window with a choice of controllers.



- 3) Choose a controller. **Note: The DX2 will be at the foot of the window when available.**

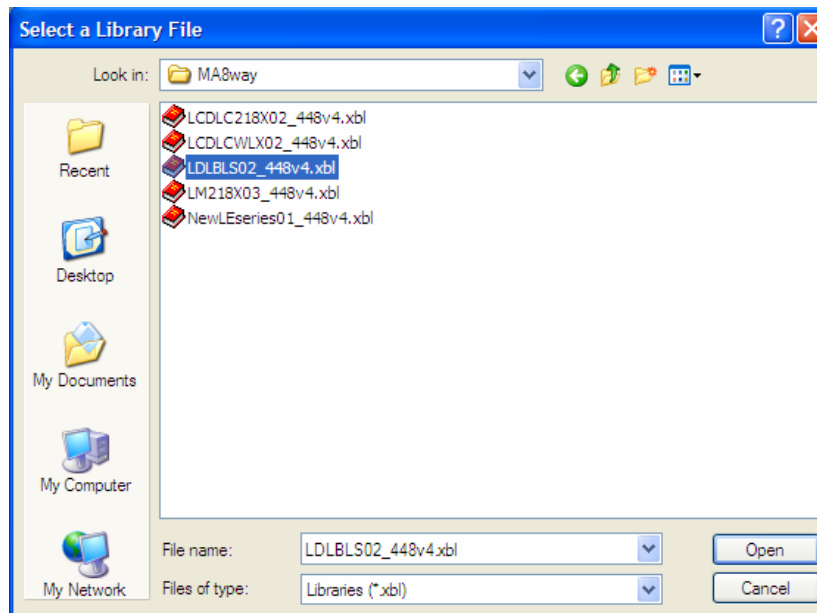
This will open the following window:



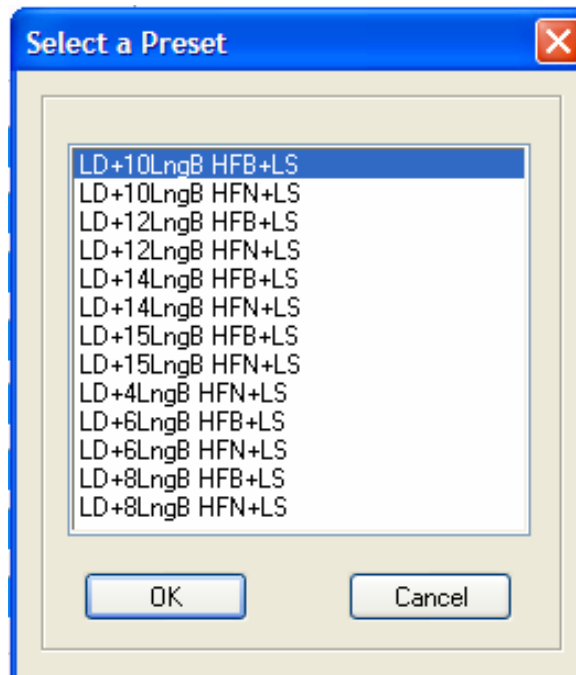
- 4) Click on the **Load Preset** button.

Choose the appropriate xbl files from the list.

(You may need to browse - the list will be located on your pc wherever you extracted them to earlier)

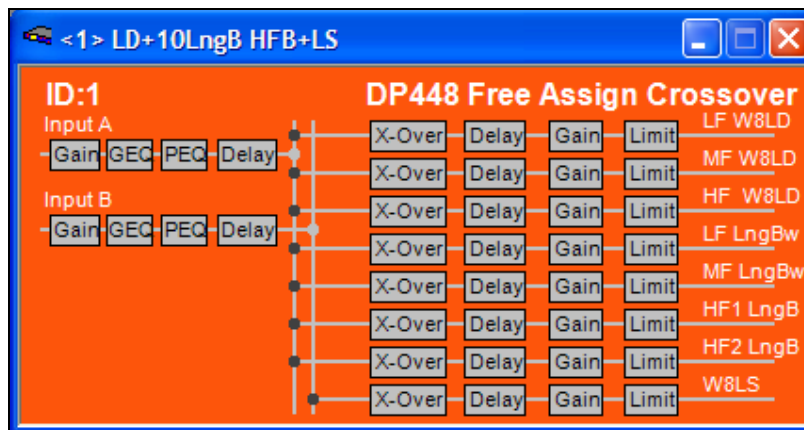


- 5) Click **Open**. A further window will open offering a choice of presets.



- 6) Click on the appropriate preset, then click **OK**.

This will open the familiar AudioCore window for the device (DP448 illustrated).



Continue to use AudioCore in the usual way.

If you encounter any problems, please do not hesitate to contact us.

## Martin Audio Limited

Century Point, Halifax Road, Cressex Business Park, High Wycombe, England. HP12 3SL.

Tel +44 (0)1494 535312 Fax +44 (0)1494 438669

Email [info@martin-audio.com](mailto:info@martin-audio.com) Web [www.martin-audio.com](http://www.martin-audio.com)