

Q10YP

Portrait yoke for Blackline Q10

BLACKLINE 

Features

- Yoke for Blackline Q10 in portrait orientation
- Truss mounting when used with a third-party half-coupler
- Pole mounting when used with pole mount adaptor ASF20045, allowing the speaker to be tilted for optimum coverage
- One central 13 mm (0.51 in) hole for mounting with an M12 or 1/2 inch bolt (not supplied)
- Two outer 8.2 mm (0.32 in) mounting holes
- Available in black only (Q10YP-B)

Applications

- Portable or installed Blackline Q10

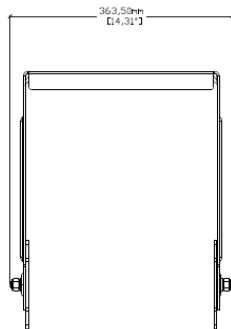
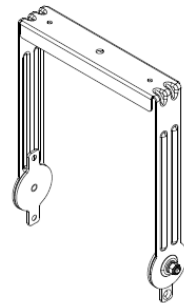
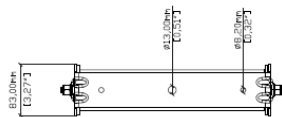
Contents

- 1 X Q10YP-B yoke

Technical Specifications

Weight: 2.37 kg (5.23 lbs)

Material: Weatherised polyester powder-coated steel



Q10YP