



V-SERIES

Signature Sound for Entertainment



Unite Your Audience
The Martin Audio Experience



V

V•SERIES

With the V.Series, Martin Audio engineers have designed a range of premium full-range loudspeakers specifically for small-medium scale entertainment installations and family KTV. Three, passive two-way systems — the V.10, V.12 and V.15 — combine the Martin Audio signature sound of warmth, clarity and smooth response with the vocal presence required for a great Karaoke experience.

Each V.Series enclosure features a user-rotatable horn for vertical or horizontal orientation and multiple M8 threaded inserts for easy installation. The trapezoid enclosures are braced internally to reduce panel resonances and improve sonic performance and are finished in a textured black paint, with drivers protected by a perforated steel grille.

Rear ports couple the low-frequency output to walls or ceiling, producing enhanced bass output that can be felt without the need for additional subwoofers. This is particularly useful where space or budget may not allow for subwoofer support. In addition the LF drivers have demodulating rings providing clear, distortion-free vocal reproduction, even at high SPL. And because KTV loudspeakers can be used at high SPL's for many hours, internal crossover networks incorporate technology to protect the low and high frequency drivers and assure reliability without interrupting the performance.

The V.Series takes the performance of compact entertainment loudspeakers to a new level and brings the celebrated signature sound of Martin Audio to premium KTV and bars.





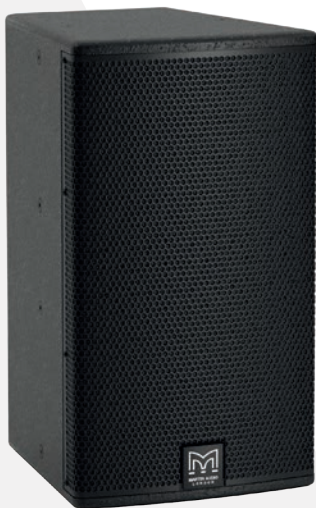
FEATURES

- Full-range, passive two-way systems
- KTV specific voicing
- Enhanced bass response from rear ports
- LF drivers with demodulating rings for distortion-free vocals
- User-rotatable horns
- Vertical and horizontal mounting option
- Cloth-backed perforated steel grilles
- Trapezoid enclosures with textured finish
- 8 Ω nominal impedance
- Internal crossover networks with LF and HF driver protection
- Twin NL4 connectors
- Multiple M8 rigging inserts

APPLICATIONS

- Family and Premium KTV
- Music bars

V.10 COMPACT FULL-RANGE SYSTEM



The V.10 is very compact, two-way passive loudspeaker designed for family KTV rooms which call for superior sound over short throw distances. It utilises a 10" (250mm)/2.5" (63mm) voice coil LF driver and a 1" (25mm) exit HF compression driver with a 1.4" (35mm) polyimide diaphragm.

It is capable of high output levels for its small size and its rotatable 90° x 50° HF horn provides extremely smooth coverage. Equal horizontal and vertical horn mouth dimensions ensure its excellent directivity control is maintained in both planes. The V.10's trapezoid enclosure is constructed from 15mm engineered wood fibre and finished in a textured black paint. It is fitted with a cloth-backed protective steel grille and M8 inserts are provided for eyebolt suspension and installation.

V.12 COMPACT FULL-RANGE SYSTEM



The V.12 is a high-performance, two-way entertainment system. With a maximum SPL of 130dB peak @ 1m, it is ideal for KTV rooms that require high sound levels and vocal clarity from a compact enclosure. It features a 12" (300mm)/2.5" (63mm) voice coil LF driver unit and a 1" (25mm) exit compression driver with a 1.4" (35mm) polyimide diaphragm on a rotatable 80° x 50° HF horn.

It produces impressive low frequency output from its optimised, compact, rear-ported trapezoid enclosure without the need for an additional subwoofer when mounted close to a wall or ceiling. The V.12's trapezoid enclosure is constructed from 15mm engineered wood fibre and fitted with multiple M8 inserts for eyebolt suspension and installation. It is finished in a black textured paint and has a cloth-backed, perforated steel grille to protect the drivers.

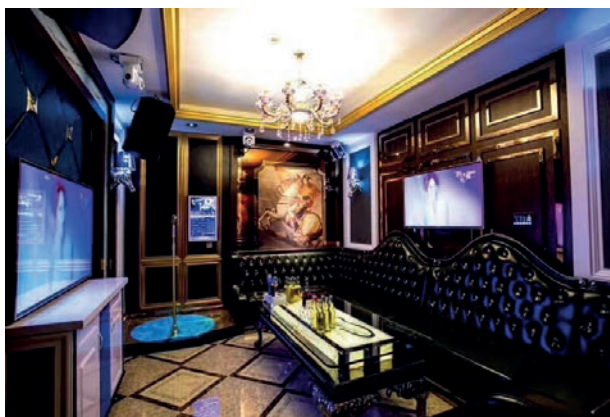
V.15 HIGH-POWER FULL-RANGE SYSTEM



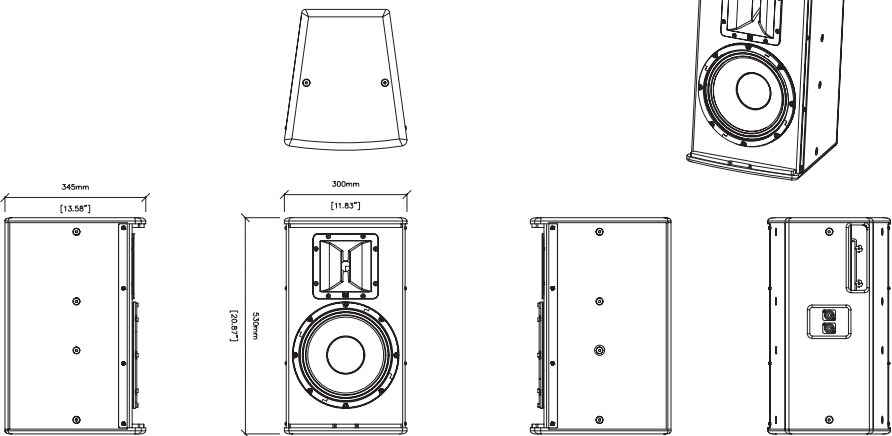
The V.15 is a very high-power, passive two-way system designed for premium KTV installations that demand the ultimate performance and output from a single enclosure.

It features a powerful 15" (380mm)/3" (75mm) voice coil LF drive unit, and a 1" (25mm) exit HF compression driver with a 1.75" (44mm) polyimide diaphragm for extended high frequency response. Its 80° x 50° coverage pattern is ideal for medium-throw applications, and it delivers superior vocal performance at very high sound levels without harshness. Twin rear ports couple with adjacent walls and ceiling to enhance low frequency output and extension.

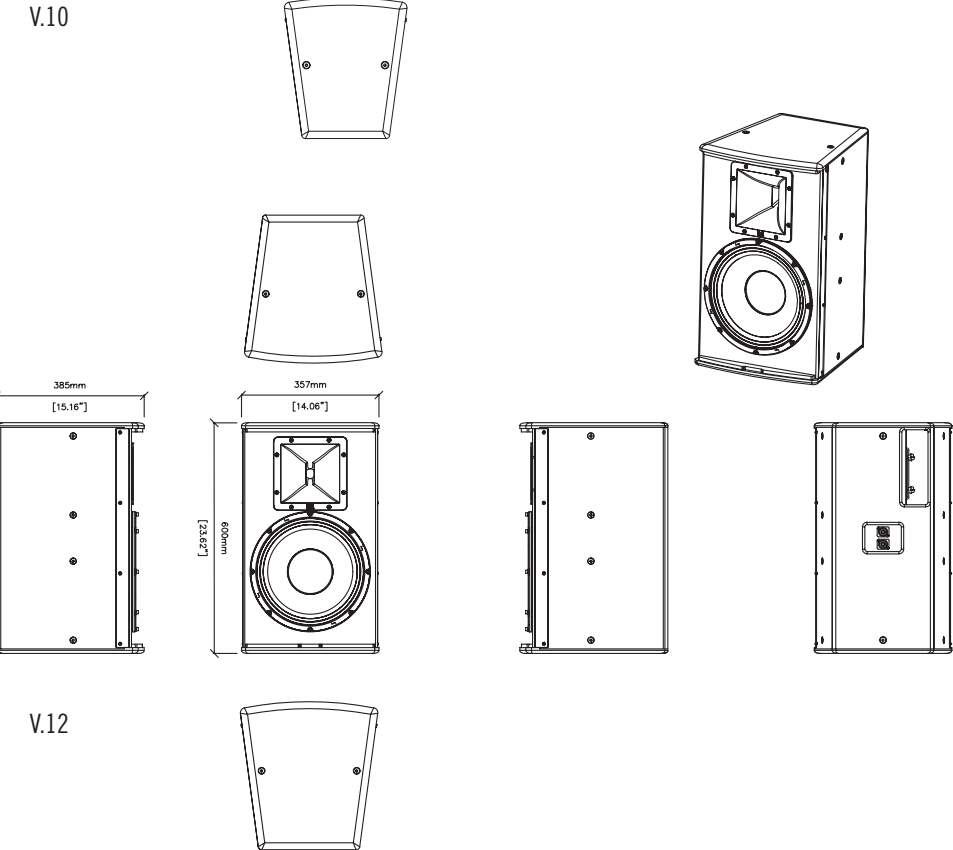
The enclosure of the V.15 is constructed from 18mm engineered wood fibre and finished in black textured paint. A cloth-backed protective steel grille protects the drivers, and M8 inserts are provided for eyebolt suspension and installation.



TECHNICAL SPECIFICATIONS



V.10



V.12

V.10

TYPE	Compact, passive two-way system
FREQUENCY RESPONSE (1)	65Hz-20kHz \pm 3dB -10dB @ 49Hz
DRIVERS	LF: 10" (250mm)/2.5" (63.5mm) voice coil, ferrite motor system HF: 1" (25mm) exit/1.4" (35mm) voice coil, polyimide dome compression driver
RATED POWER (2)	500W program, 1000W peak
RECOMMENDED AMP	VIA2502
SENSITIVITY (8)	98dB
MAXIMUM SPL (9)	125dB program, 128dB peak
NOMINAL IMPEDANCE	8 ohms
DISPERSION (-6dB)	90° H x 50° V (user-rotatable)
CROSSOVER	2.8kHz passive
ENCLOSURE	Trapezoid
FINISH	Black textured paint
PROTECTIVE GRILLE	Black perforated steel with scrim cloth backing
CONNECTORS	2 x NL4 type
PIN CONNECTIONS (INPUT)	1+/-
PIN CONNECTIONS (LINK)	1+/- to 1+/-
FITTINGS	14 x M8 inserts
DIMENSIONS	(W) 300mm x (H) 530 x (D) 345mm (W) 11.8ins x (H) 20.9ins x (D) 13.6ins
WEIGHT	16kg (35.3lbs)

V.12

TYPE	Compact, passive two-way system
FREQUENCY RESPONSE (1)	62Hz-20kHz \pm 3dB -10dB @ 47Hz
DRIVERS	LF: 12" (300mm)/2.5" (63.5mm) voice coil, ferrite motor system HF: 1" (25mm) exit/1.4" (35mm) voice coil, polyimide dome compression driver
RATED POWER (2)	600W program, 1200W peak
RECOMMENDED AMP	VIA5002
SENSITIVITY (8)	99dB
MAXIMUM SPL (9)	127dB program, 130dB peak
NOMINAL IMPEDANCE	8 ohms
DISPERSION (-6dB)	80° H x 50° V (user-rotatable)
CROSSOVER	2.5kHz passive
ENCLOSURE	Trapezoid
FINISH	Black textured paint
PROTECTIVE GRILLE	Black perforated steel with scrim cloth backing
CONNECTORS	2 x NL4 type
PIN CONNECTIONS (INPUT)	1+/-
PIN CONNECTIONS (LINK)	1+/- to 1+/-
FITTINGS	14 x M8 inserts
DIMENSIONS	(W) 357mm x (H) 600mm x (D) 385mm (W) 14.1ins x (H) 23.6ins x (D) 15.2ins
WEIGHT	21kg (46.3lbs)

V.15

TYPE	High-power, passive two-way system
FREQUENCY RESPONSE (1)	56Hz-20kHz ± 3dB
	-10dB @ 40Hz
DRIVERS	LF: 15" (380mm)/3" (75mm) voice coil, ferrite motor system
	HF: 1" (25mm) exit/1.7" (44mm) voice coil, polyimide dome compression driver
RATED POWER (2)	1000W program, 2000W peak
RECOMMENDED AMP	VIA5002
SENSITIVITY (8)	100dB
MAXIMUM SPL (9)	130dB program, 133dB peak
NOMINAL IMPEDANCE	8 ohms
DISPERSION (-6dB)	80° H x 50° V (user-rotatable)
CROSSOVER	2.3kHz passive
ENCLOSURE	Trapezoid
FINISH	Black textured paint
PROTECTIVE GRILLE	Black perforated steel with scrim cloth backing
CONNECTORS	2 x NL4 type
PIN CONNECTIONS (INPUT)	1+/-
PIN CONNECTIONS (LINK)	1+/- to 1+/-
FITTINGS	10 x M8 inserts
DIMENSIONS	(W) 419mm x (H) 700mm x (D) 445mm
	(W) 16.5ins x (H) 27.6ins x (D) 17.5ins
WEIGHT	31kg (68.3lbs)

Notes

(1) Measured on-axis in half (2pi) space at 2 metres, then referred to 1 metre.

(2) AES Standard ANSI S4.26-1984.

(3) Measured in half (2pi) space at 2 metres with 1 watt input, using band limited pink noise, then referred to 1 metre.

(4) Measured in half (2pi) space at 2 metres using band limited pink noise, then referred to 1 metre.

(5) Measured on-axis in open (4pi) space at 2 metres, then referred to 1 metre.

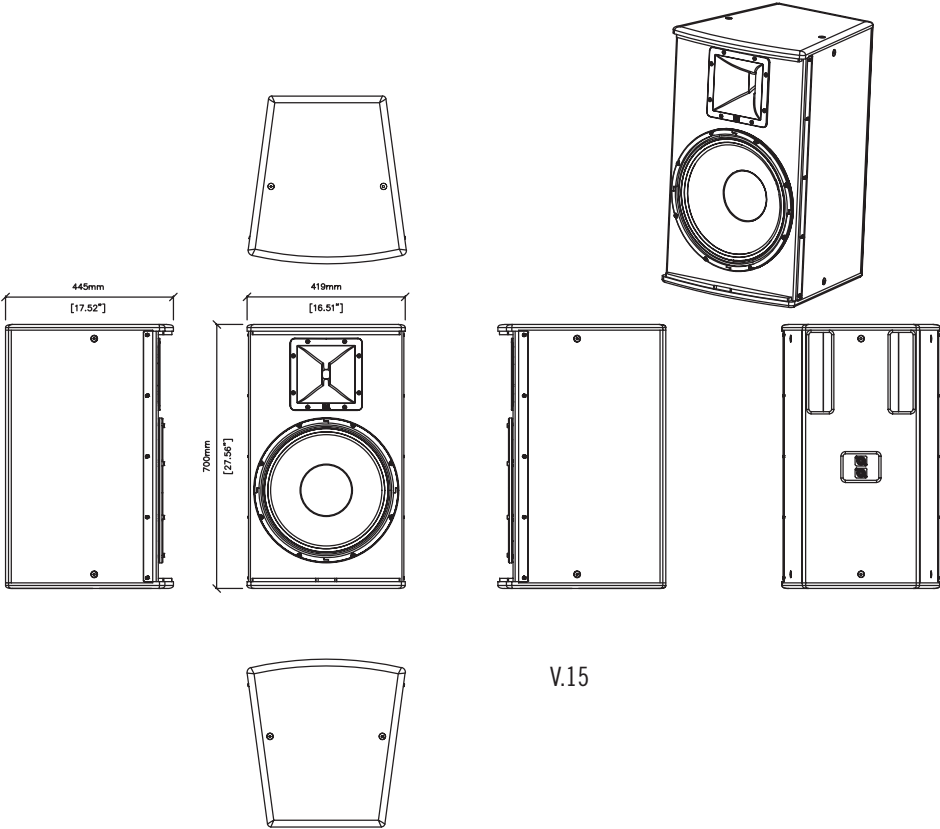
(6) Measured in open (4pi) space at 2 metres with 1 watt input, using band limited pink noise, then referred to 1 metre.

(7) Measured in open (4pi) space at 2 metres using band limited pink noise, then referred to 1 metre.

(8) Measured in open (4pi) space at 2 metres with 2.83v input, using band limited pink noise, then referred to 1 metre.

(9) Calculated at 1 metre.

(10) Measured in half (2pi) space at 2 metres with 2.83V input, using band limited pink noise, then referred to 1 metre.



V.15



Martin Audio Limited

Century Point

Halifax Road

Cressex Business Park

High Wycombe

Buckinghamshire

HP12 3SL

England

FOR SALES ENQUIRIES:

UK

Telephone: +44 (0)1494 535312

E-mail: info@martin-audio.com

www.martin-audio.com

All information is Copyright © 2020 Martin Audio Ltd.

Martin Audio, the Martin Audio logo and Hybrid are registered trademarks of Martin Audio Ltd. in the United Kingdom, United States and other countries; all other Martin Audio trademarks are the property of Martin Audio Ltd.



Unite Your Audience
The Martin Audio Experience

Version 2.1